



AUTUMN

 LANE

BY CARESCO HOMES



Our tradition of quality at an
affordable price.



Your Builder

Caresco Homes is a local family builder based in Stockton, California, known for our integrity, reliability and creating homes of distinctive style and superior design.

For over two decades, owners Mike and Doug Carruesco have perfected the skills necessary to produce quality homes. Because we understand the needs of today's homebuyer, we take a hands-on approach to every design detail, creating functional elegance and timeless architectural character.

We realize that the construction performed on our homes is the ultimate reflection of our company and take great pride in the strong relationships we have developed with the best subcontractors.

Recognized as "San Joaquin County's Best" six times, our company has captured the hearts of local residents. Over the years, the Carruescos have built more than 700 luxury homes which our homebuyers love to call home.

It is our attention to detail and level of quality that makes Caresco Homes a success.



(209) 952-5112 INFO LINE

WWW.CARESCOHOMES.COM

Included Features

ALL INCLUSIVE DISTINCTIVE EXTERIORS

- Spacious lot sizes (6,000+ sq. ft.)
- Architecturally-selected exterior color schemes
- French, Tuscan and Craftsman home styles
- 3-Coat stucco system, with decorative stone accents
- 2 or 2 1/2 Car garages (complete sheetrocked)
- Metal sectional, roll-up garage doors with door opener
- Milgard® brand windows
- High-quality fire resistant concrete roof tile
- Raised-panel insulated 8 ft. front entry door
- Covered front porches
- Covered rear cement porches per plan
- Pre-treated for subterranean termite protection
- Professionally-designed and installed front yard landscaping with automatic sprinklers
- Designer-selected exterior lighting fixtures
- Full side and rear yard "good-neighbor" wood fencing
- Electrical GFI outlet in front and rear yards
- Exterior rain gutters with down spouts
- Exterior hose-bibs (front and rear yards)
- Illuminated address plaques

DRAMATIC INTERIORS

- Choice of two-tone designer paint packages for interior wall/trim
- Rounded drywall corners
- Minimum 9 foot ceiling heights throughout
- Media niche in family rooms or great rooms, per plan
- Den/Bedroom/Dining options, per plan
- Colonial trim and baseboard
- Chrome-finish lever-style door hardware
- Direct-vent gas heating fireplace with decorative surround at family room or great room
- Choice of Designer selected laminate hardwood flooring or 18" hand-set ceramic tile at kitchen/nook/entry
- Oval soaking tub and separate spacious shower with clear glass enclosure
- Dramatic 36" master vanity with melamine interiors and concealed hinges
- Beechwood cabinetry in choice of 3 designer stain colors
- Easy-care solid surface countertops with 4" backsplash
- Dual integrated vanity sinks
- Price Pfister chrome plumbing fixtures
- Full-width vanity mirror
- Compartmentalized water closet
- Soffited ceilings with recessed lighting
- Wall-to-wall carpeting with pad
- Designer-selected overhead lighting fixtures in bronze finish
- Front doorbell with chimes
- Raised-panel interior doors and closets
- Recessed lighting
- Plentiful built-in laundry room cabinetry
- Rough-plumbed for interior laundry sink
- Pre-wired for cable TV in family room and bedrooms
- Pre-wired for security alarm system
- 3 1/4" colonial baseboards
- Smoke detectors
- Fire sprinklers
- Carbon monoxide detectors
- GFI outlet in garage

GOURMET KITCHENS

- Granite slab countertops with bull-nose edge and 6" backsplash, choice of 3 designer colors
- Walk-in granite slab island with eating bar
- Large storage pantry, per plan with sliding glass door
- Spacious breakfast nooks
- Stainless steel G.E. appliance package
 - Choice of gas or electric range and self-cleaning oven
 - Built-in microwave above range
 - Energy Star® Multi-cycle dishwasher
- Stainless steel, dual compartment, undermounted sink with waste disposal
- Price Pfister pull-out, spray faucet
- Refrigerator space plumbed for ice-maker
- Pre-wired for telephone
- Choice of designer-selected laminate hardwood flooring or 18" hand-set ceramic tile

ELEGANT MASTER SUITES

- Energy saving ceiling fan
- Pre-wired for cable TV and telephone
- Spacious walk-in closet
- Oval soaking tub and separate spacious shower with clear glass enclosure
- Dramatic 36" master vanity with melamine interiors and concealed hinges
- Solid surface countertops with 4" backsplash
- Dual integrated sinks
- Price Pfister chrome plumbing fixtures
- Full-width vanity mirror
- Compartmentalized water closet
- Soffited ceilings with recessed lighting
- 13" Hand-set ceramic tile flooring

SECONDARY BEDROOMS & BATHS

- Overhead lighting fixtures included, in bronze finish
- Stained beech wood cabinetry with melamine interiors and concealed hinges
- Solid surface vanity with 4" backsplash
- Dual integrated sinks
- Full width vanity mirror
- Price Pfister chrome plumbing fixtures
- Cast-iron tub/shower with cultured marble surround
- 13" Hand-set ceramic tile flooring

ENERGY CONSERVATION FEATURES

- Aggressive CalGreen and Title 24 Energy Standards
- Low E dual-pane vinyl windows (with screens)
- Sliding glass doors (with screens)
- Two ceiling fans included
- Energy efficient gas furnace and air-conditioning with automatic set-back thermostat
- 40-gallon quick recovery water heater
- Energy conserving insulation includes R13 in exterior walls and R38 in attics
- Insulated interior walls at laundry room and bathrooms
- 220-volt wiring, gas outlet and vent for dryer
- Radiant barrier sheathing in attic
- Insulated front door
- Covered backyard patios, per plan

In an effort to continuously improve our product, we reserve the right to change elevations, specifications, materials and prices without prior notice. Variations in the floor plans and elevations may exist and square footages are approximate.

Plan 1

Approximately 1,769 sq. ft.



FRENCH



CRAFTSMAN



TUSCAN

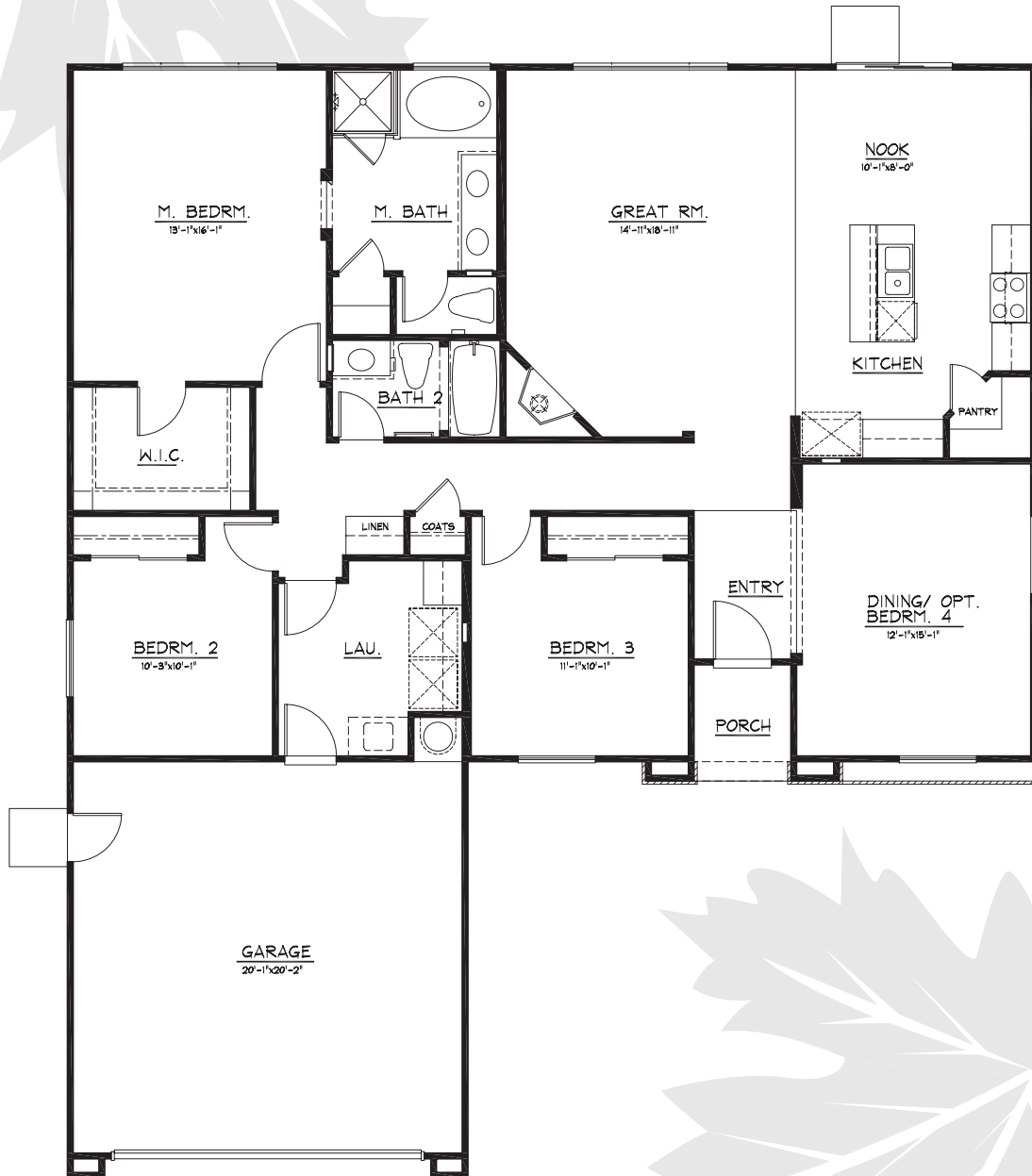
The renderings depicted are an artist's conception. Variations in elevations and floor plan may exist. Square footages are approximate.

Plan 1

Approximately 1,769 sq. ft.

A THREE BEDROOM, 2 BATH SINGLE STORY HOME WITH A GREAT ROOM

This plan includes options for an office/den and a 4th bedroom.



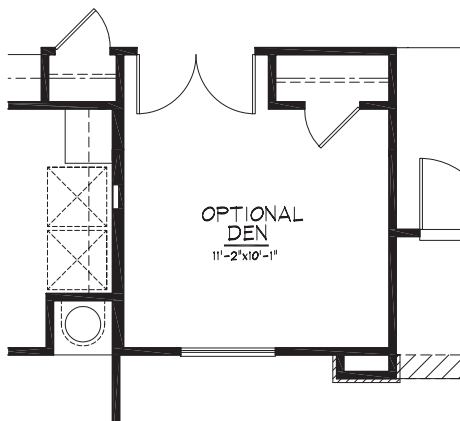
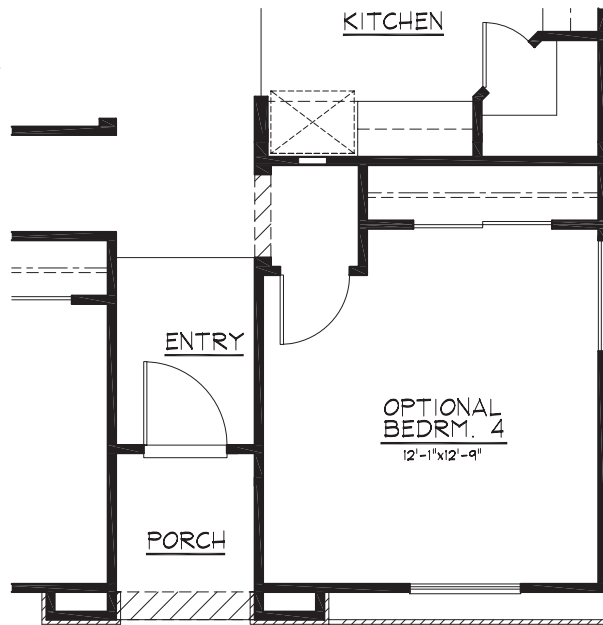
In an effort to continuously improve our product, we reserve the right to change elevations, specifications, materials and prices without prior notice. Variations in the floor plans and elevations may exist and square footages are approximate.

Plan 1 Options

Approximately 1,769 sq. ft.

A THREE BEDROOM, 2 BATH SINGLE STORY HOME WITH A GREAT ROOM

This plan includes options for an office/den and a 4th bedroom.



In an effort to continuously improve our product, we reserve the right to change elevations, specifications, materials and prices without prior notice. Variations in the floor plans and elevations may exist and square footages are approximate.

Plan 2

Approximately 1,957 sq. ft.



FRENCH



CRAFTSMAN



TUSCAN

The renderings depicted are an artist's conception. Variations in elevations may exist. Square footages are approximate.

Plan 2 – Options

Approximately 1,957 sq. ft.

ELEVATIONS SHOWN BELOW ARE *3-car garage options*.



FRENCH



CRAFTSMAN



TUSCAN

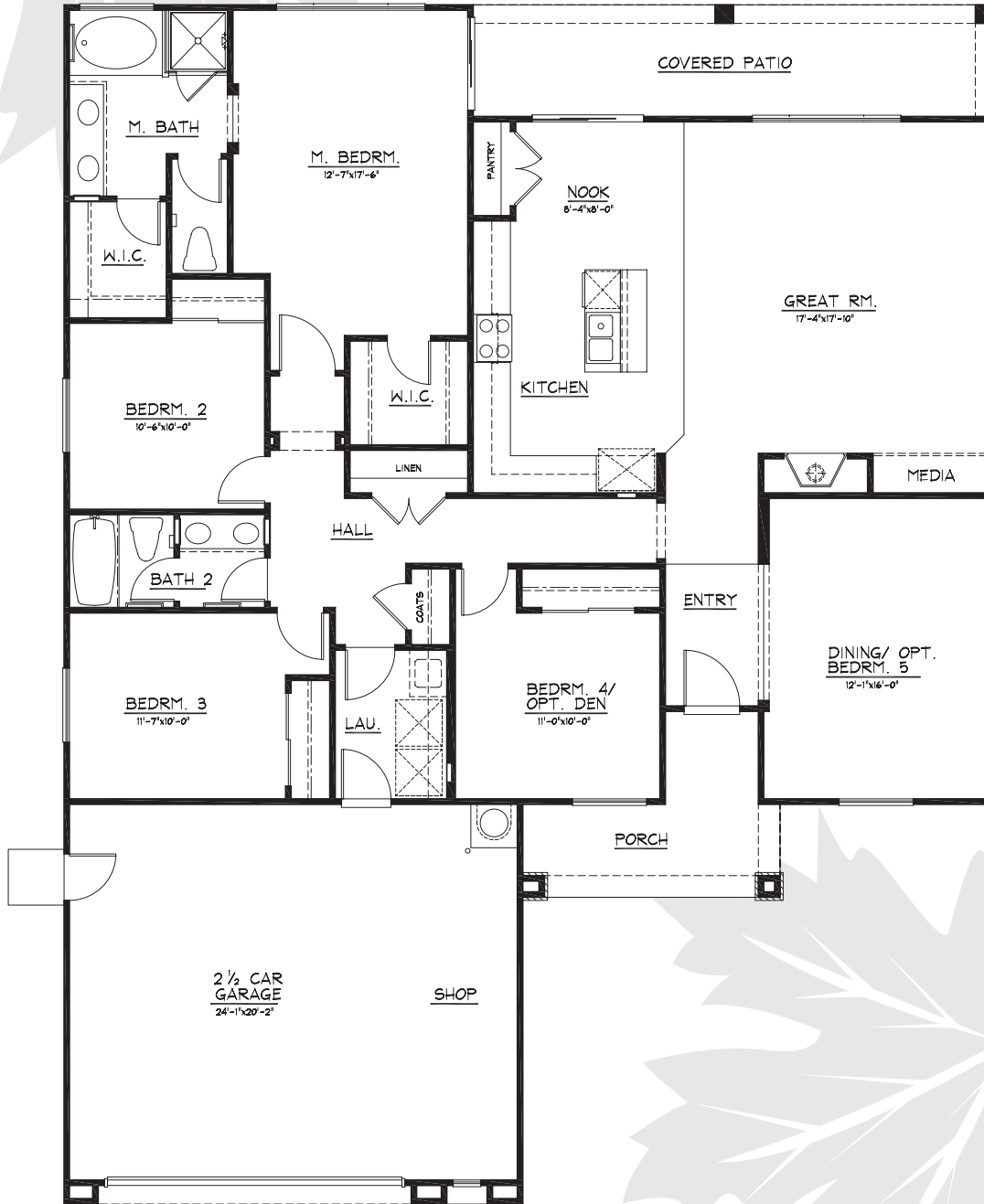
The renderings depicted are an artist's conception. Variations in elevations may exist. Square footages are approximate.

Plan 2

Approximately 1,957 sq. ft.

A FOUR BEDROOM, 2 BATH SINGLE STORY HOME WITH A GREAT ROOM

This plan includes options for an office/den and a 5th bedroom.



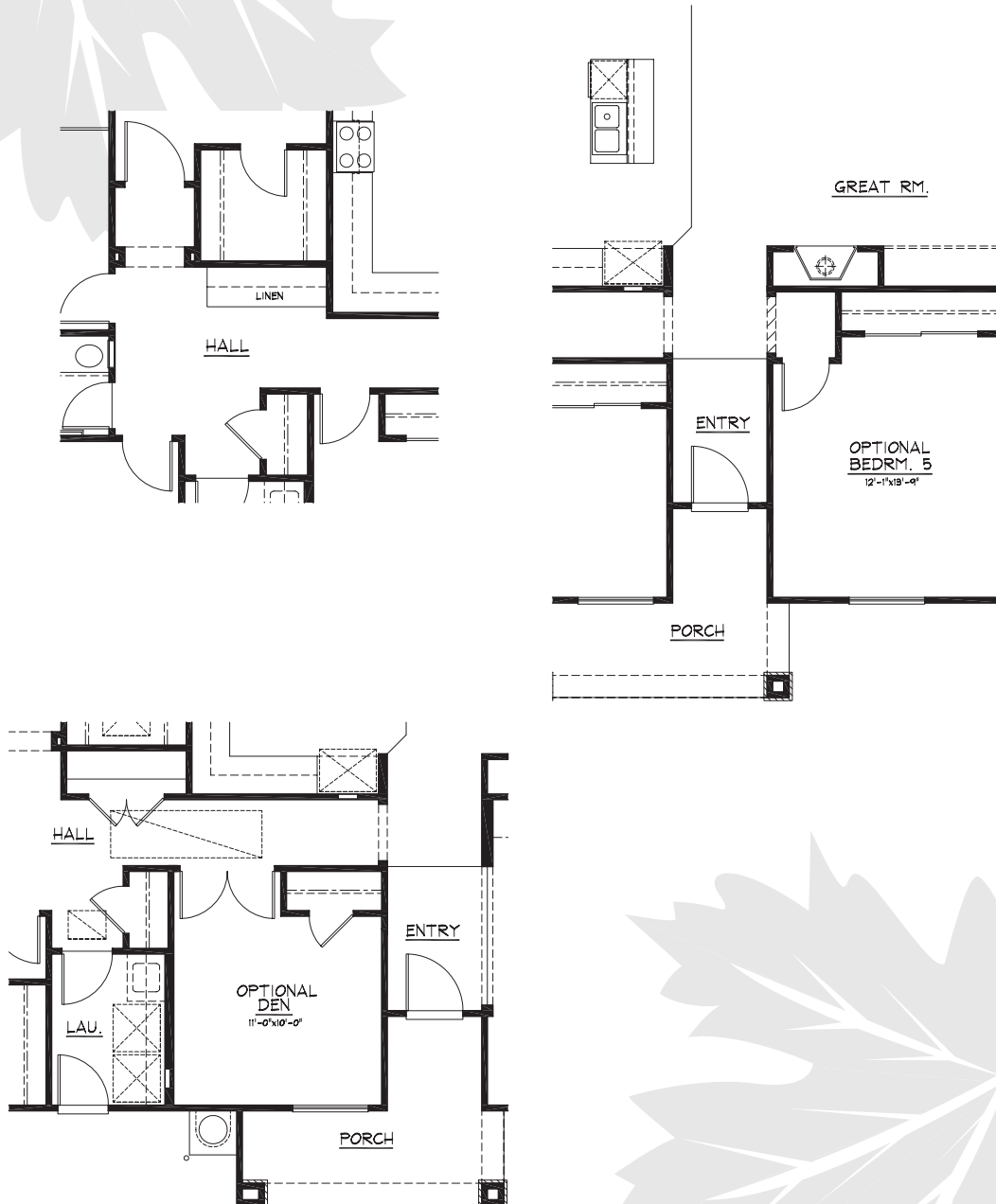
In an effort to continuously improve our product, we reserve the right to change elevations, specifications, materials and prices without prior notice. Variations in the floor plans and elevations may exist and square footages are approximate.

Plan 2 Options

Approximately 1,957 sq. ft.

A FOUR BEDROOM, 2 BATH SINGLE STORY HOME WITH A GREAT ROOM

This plan includes options for an office/den, a 5th bedroom and a 3-car garage



In an effort to continuously improve our product, we reserve the right to change elevations, specifications, materials and prices without prior notice. Variations in the floor plans and elevations may exist and square footages are approximate.

Plan 3

Approximately 2,199 sq. ft.



FRENCH



CRAFTSMAN



TUSCAN

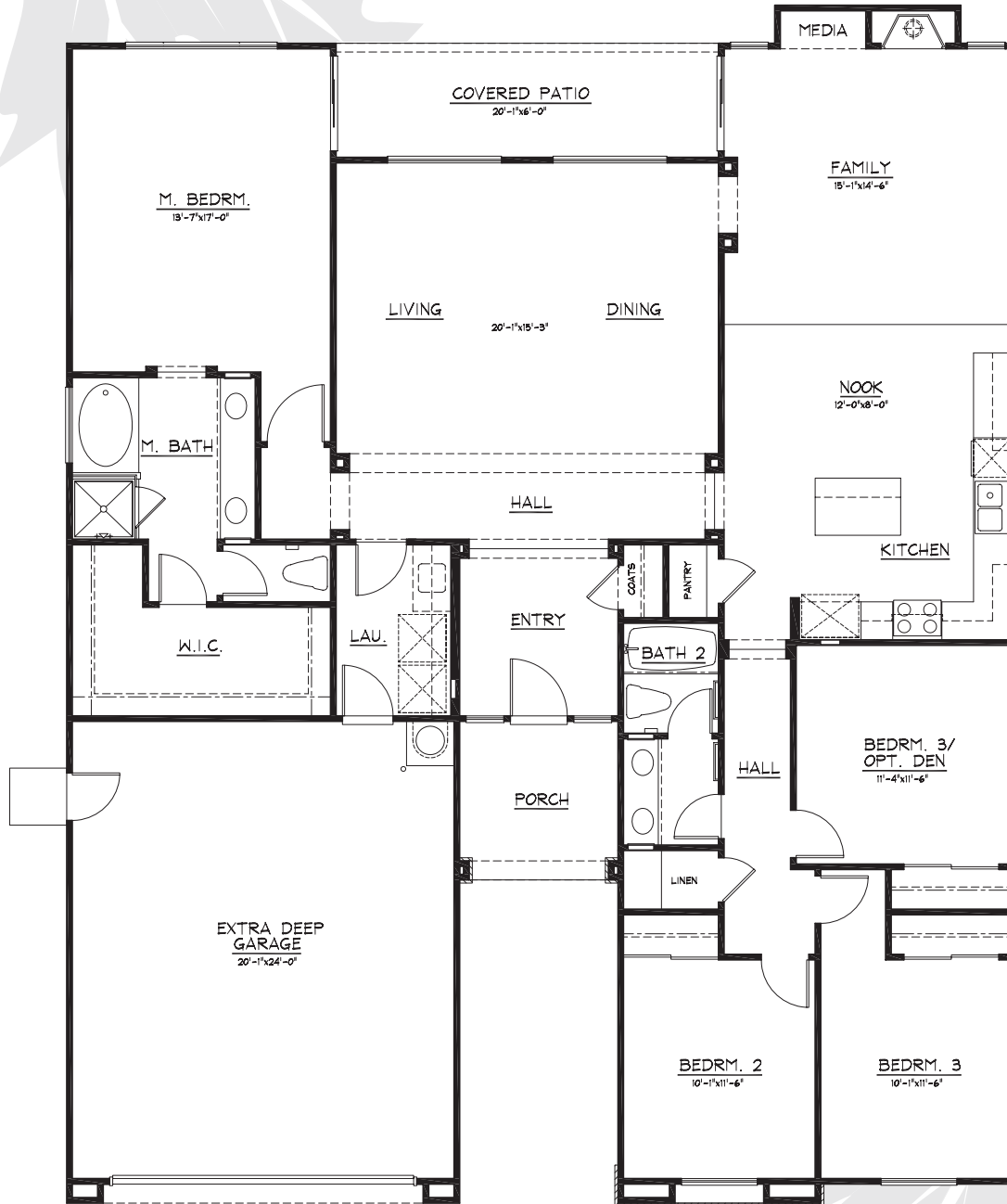
The renderings depicted are an artist's conception. Variations in elevations and floor plan may exist. Square footages are approximate.

Plan 3

Approximately 2,199 sq. ft.

A FOUR BEDROOM, 2 BATH SINGLE STORY HOME

This plan includes options for an office/den and a 3-car garage.



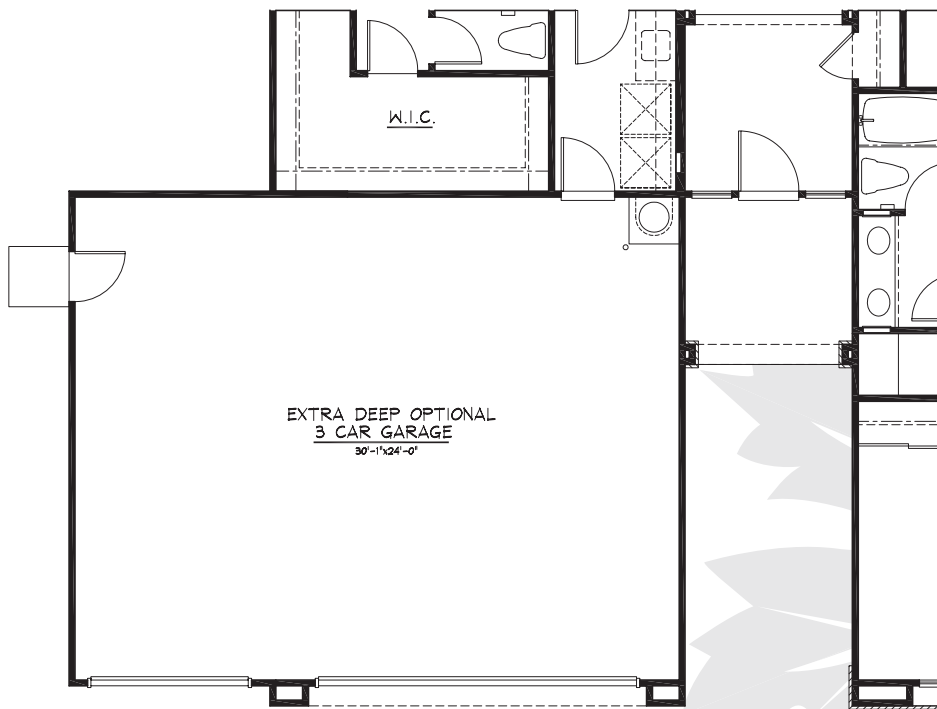
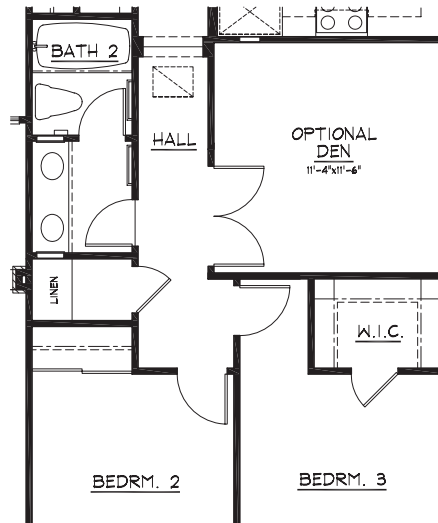
In an effort to continuously improve our product, we reserve the right to change elevations, specifications, materials and prices without prior notice. Variations in the floor plans and elevations may exist and square footages are approximate.

Plan 3 Options

Approximately 2,199 sq. ft.

A FOUR BEDROOM, 2 BATH SINGLE STORY HOME

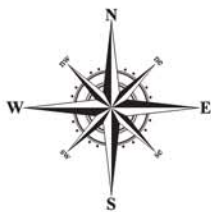
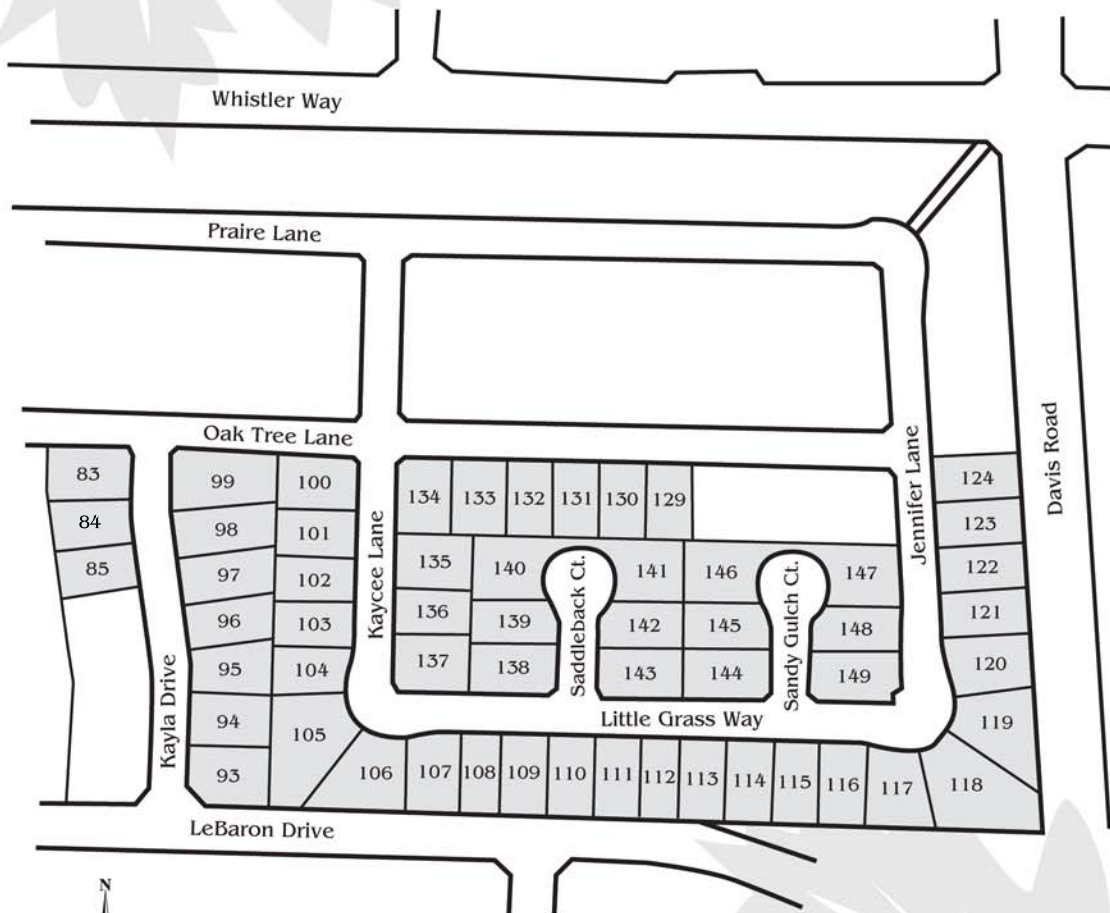
This plan includes options for an office/den and a 3-car garage.



In an effort to continuously improve our product, we reserve the right to change elevations, specifications, materials and prices without prior notice. Variations in the floor plans and elevations may exist and square footages are approximate.



Home Sites



Artist Rendering
Map not to scale

(209) 952-5112 INFO LINE

WWW.CARESCOHOMES.COM



In an effort to continuously improve our product, we reserve the right to change elevations, specifications, materials and prices without prior notice. Variations in the floor plans and elevations may exist and square footages are approximate.



Pricing List

Plan 1

Approximately 1,769 sq. ft.

PRICED FROM

A THREE BEDROOM, 2 BATH SINGLE STORY HOME WITH A GREAT ROOM, 2-CAR GARAGE

This plan includes options for an office/den and a 4th bedroom

Plan 2

Approximately 1,957 sq. ft.

PRICED FROM

A FOUR BEDROOM, 2 BATH SINGLE STORY HOME WITH A GREAT ROOM, 2 1/2 CAR GARAGE

This plan includes options for an office/den, a 5th bedroom and a 3-car garage

WITH 3-CAR GARAGE _____

Plan 3

Approximately 2,199 sq. ft.

PRICED FROM

A FOUR BEDROOM, 2 BATH SINGLE STORY HOME, EXTRA DEEP 2-CAR GARAGE

This plan includes options for an office/den and a 3-car garage

WITH 3-CAR GARAGE _____



In an effort to continuously improve our product, we reserve the right to change elevations, specifications, materials and prices without prior notice. Variations in the floor plans and elevations may exist and square footages are approxiamte.

